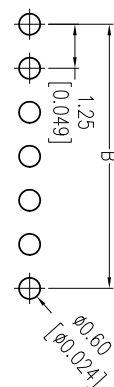
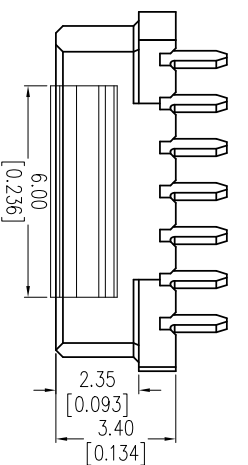
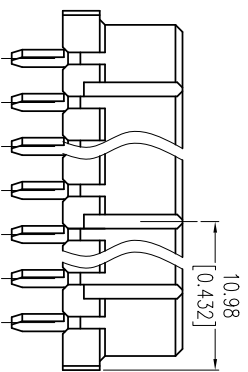


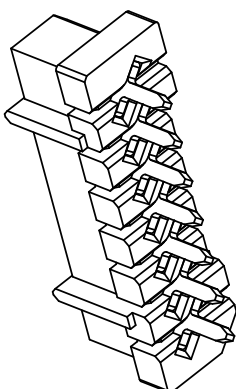
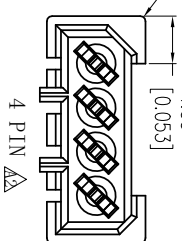
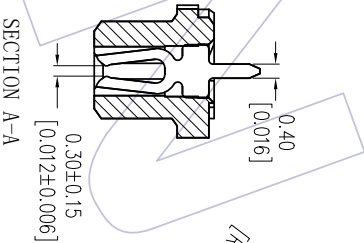
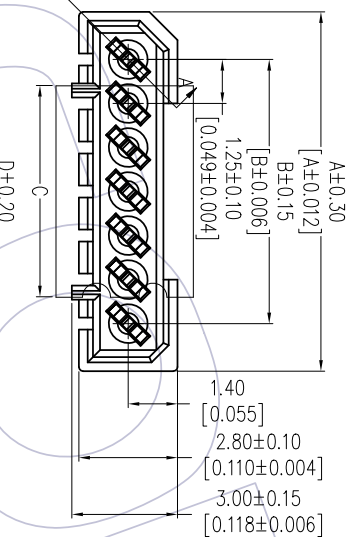
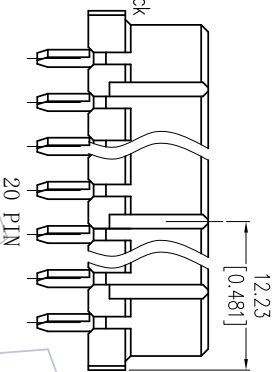
# HSF

**NOTES:**

Voltage Rating: 50V AC/DC  
 Current Rating: 0.5AMP  
 Contact Resistance: 20mΩ max  
 Withstand Voltage: 500V AC/Minute  
 Insulation Resistance: 500MΩ min  
 Operation Temperature: -40℃ to +105℃



Contact Material: Phosphor Bronze  
 Contact Plating: 100~200u" Tin Plated Over  
 50~80u" Nickel  
 Insulator Material: PA9T+33%GF UL94V-0 Black



## Ordering Information

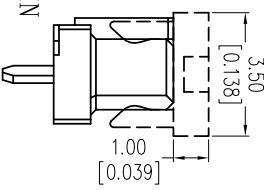
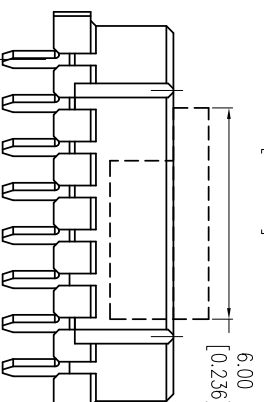
3652-S XXX - 034 XX R04

No. of Pins  
 004: 04 Pin  
 005: 05 Pin  
 006: 06 Pin  
 007: 07 Pin  
 008: 08 Pin  
 010: 10 Pin  
 017: 17 Pin  
 020: 20 Pin

Plating  
 G0=Gold Flash  
 G3=10u"Gold  
 G4=15u"Gold  
 G5=30u"Gold  
 S0=Gold Flash/Tin  
 S3=10u"Gold/Tin  
 S4=15u"Gold/Tin  
 S5=30u"Gold/Tin  
 SN=Tin

Packing  
 R=Tape&Reel

Pos	PART NO.	DIM. C
4-7PIN	CAP2521-M201	6.00
8-10PIN	CAP2300-G101	6.00
17-20PIN	CAP2521-M201	6.00



21.99	25.65	23.75	26.45	20
18.24	21.90	20.00	22.70	17
9.49	13.15	11.25	13.95	10
6.99	10.65	8.75	11.45	8
5.74	9.40	7.50	10.20	7
4.49	8.15	6.25	8.95	6
3.24	6.90	5.00	7.70	5
1.99	5.65	3.75	6.45	4

E D B A PIN数

A3

REV	DATE	MODIFICATION DESCRIPTION	CHANGE	OPERATION	DRAW	SCALE	FIT	PART NO.	TITLE:	WCN-Dongguan	WCN-Kunshan
A3	2020.09.03	Add CAP	DuYing	OPERATION ±0.40	DRAW DuYing	SCALE UNIT	FIT mm	3652-SXXX-034XXR04	1.25mm BTB FEMALE .180° DIP, H=3.4 W/O POST	Http: www.wcon.com	
A2	2017.12.20	Modify	Ding	XX ±0.25	CHECK	A4					
A1	2017.07.11	DIP: 1.30±0.25 → 1.45±0.25		X,XX ±0.15	DATE	1/1					
A0	2016.10.20	NEW		X,XXX ±3°	DATE						
REV	DATE	MODIFICATION DESCRIPTION	CHANGE	ANGLE TOL	APPROVE	SHEET		Customer NO.			

# WCON

Http: www.wcon.com

Tel: +86 769 85358920 Fax: +86 512 57468408  
 Tel: +86 769 85358915 Fax: +86 512 57468468  
 E-mail: sales@wcon.com E-mail: sales@wcon.com

Recommended P.C.B Layout (Top Side)  
 (PCB BOARD TOLERANCE ±0.05)